

# MDD

## Magnetic Direct Drive Motor

The Magnetic Direct Drive motor (MDD) is a unique brushless motor developed and patented by COMINFO and designed especially for access control industry like turnstiles, speed gates, immigration gates, selfboarding-gates, etc.

The main benefit of MDD motor is absolutely maintenance-free operation. There is no gearbox, no clutch and no oil. Due to these features it has an extremely long life-time and withstands rush environment in dust and humidity with millions of operation cycles.

This unique motor is the best choice for installations with a high flow of people like office buildings, metro stations, railway stations or airports. This motor is designed for more than 20 million cycles.

It is the quietest motor on the market, which also makes it as a perfect choice for libraries, schools, museums, etc.

### **MDD motor can also be equipped by optional locking mechanism:**

- Spring brake: internal brake for standard conditions
- Tooth brake: external tooth brake with hardlock feature for heavy conditions

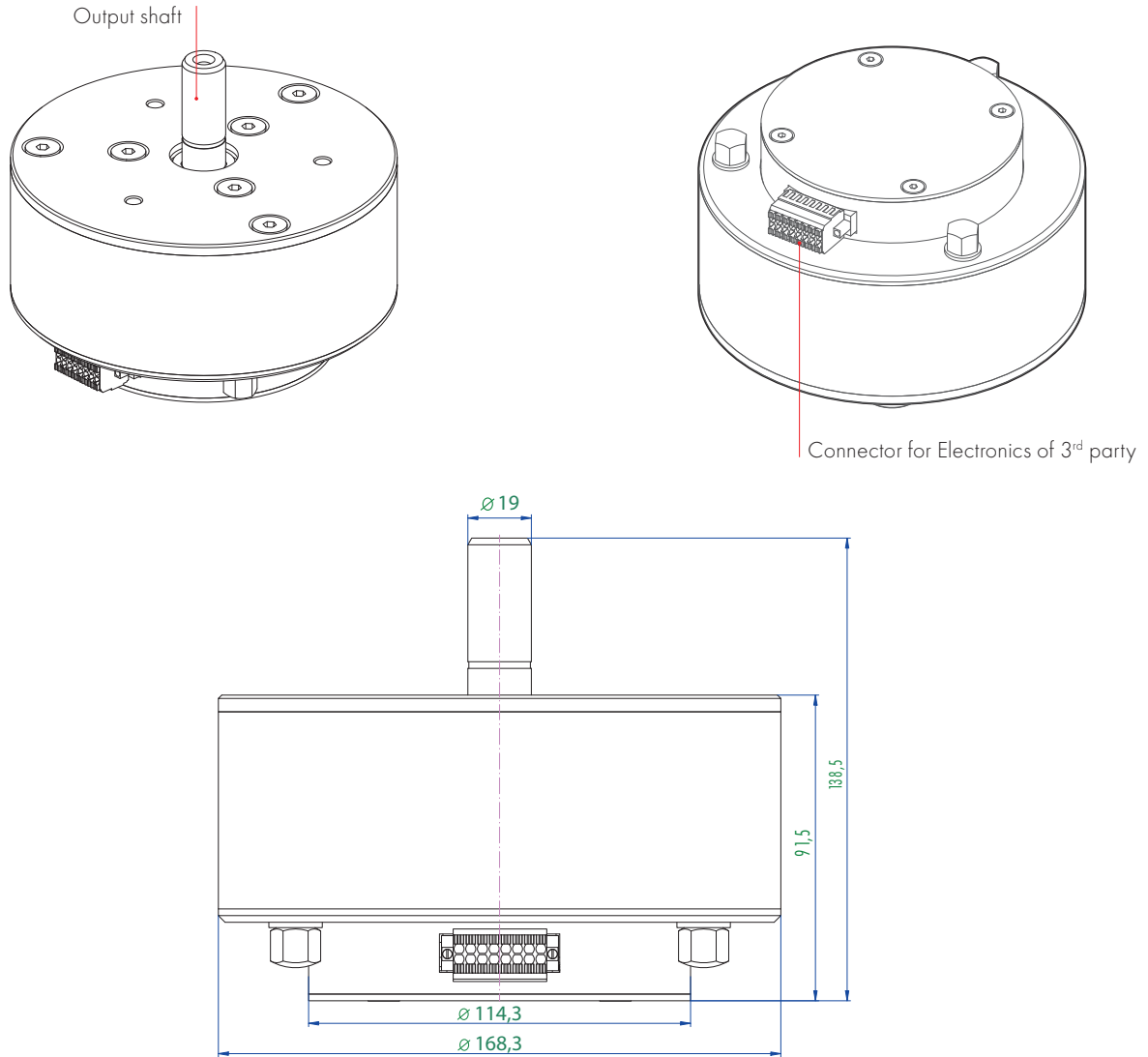
### **Benefits**

- **Maintenance free motor**
  - brushless, no gearbox, no clutch, no oil
- MCBF 20 000 000
- Dust resistance
- Humidity resistance
- The quietest motor on the market (in access control industry)
- Adjustable speed and torque
- Very fast acceleration and deceleration

**Technical specification:**

<b>MCBF</b>	20 000 000 cycles
<b>Operating Temperature</b>	-40 °C up to +60°C (-40 °F up to 140 °F)
<b>Communication Interface</b>	RS485
<b>Dimensions</b>	Diameter 168,3mm (7,09"), Height (excl. shaft) 91,5 mm (3,6")
<b>IP Class</b>	IP 40
<b>Power Voltage</b>	13.8 VDC
<b>Current Peak</b>	13.5 A
<b>Max. Static Torque</b>	7.20 Nm
<b>Max. Speed</b>	170 RPM
<b>Brake Type (optional)</b>	spring / tooth

Specifications are subject to change without prior notice. ed. X-2022



**Cominfosec**

11 W. College Drive - Suite L  
 Arlington Heights, IL 60004  
 (847) 847 - 1100  
 info@cominfosec.com